



## PORT OOSTENDE

Port Oostende is situated in Europe's busiest maritime area 51°14' N - 2° 56' E.

This versatile short sea port accommodates all types of coastal maritime traffic:

- > offshore installation & service vessels
- > RORO
- > bulk
- > project cargo
- > cruises

Port Oostende focuses on continuity, growth and employment within five pillars: 'Blue Economy', 'Lift-on Lift-off, Bulk & Projectcargo', 'Cruises & Roll-on Roll-off', 'Circular Industry' and the 'Fishery Sector'.

These sectors are further expanded on the basis of **two foundations**: prioritising safety, health and environment and second supporting innovation, research and development.

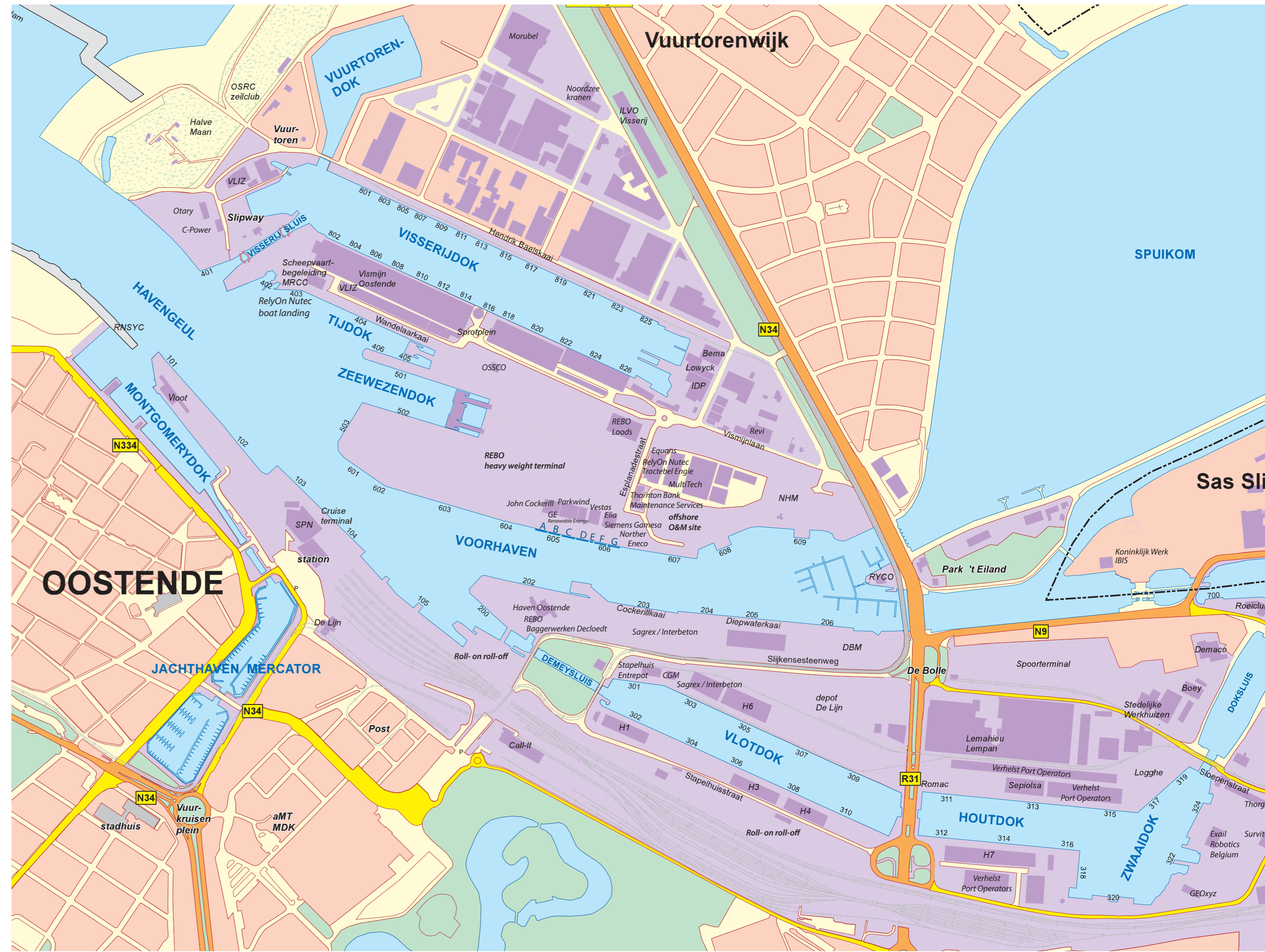
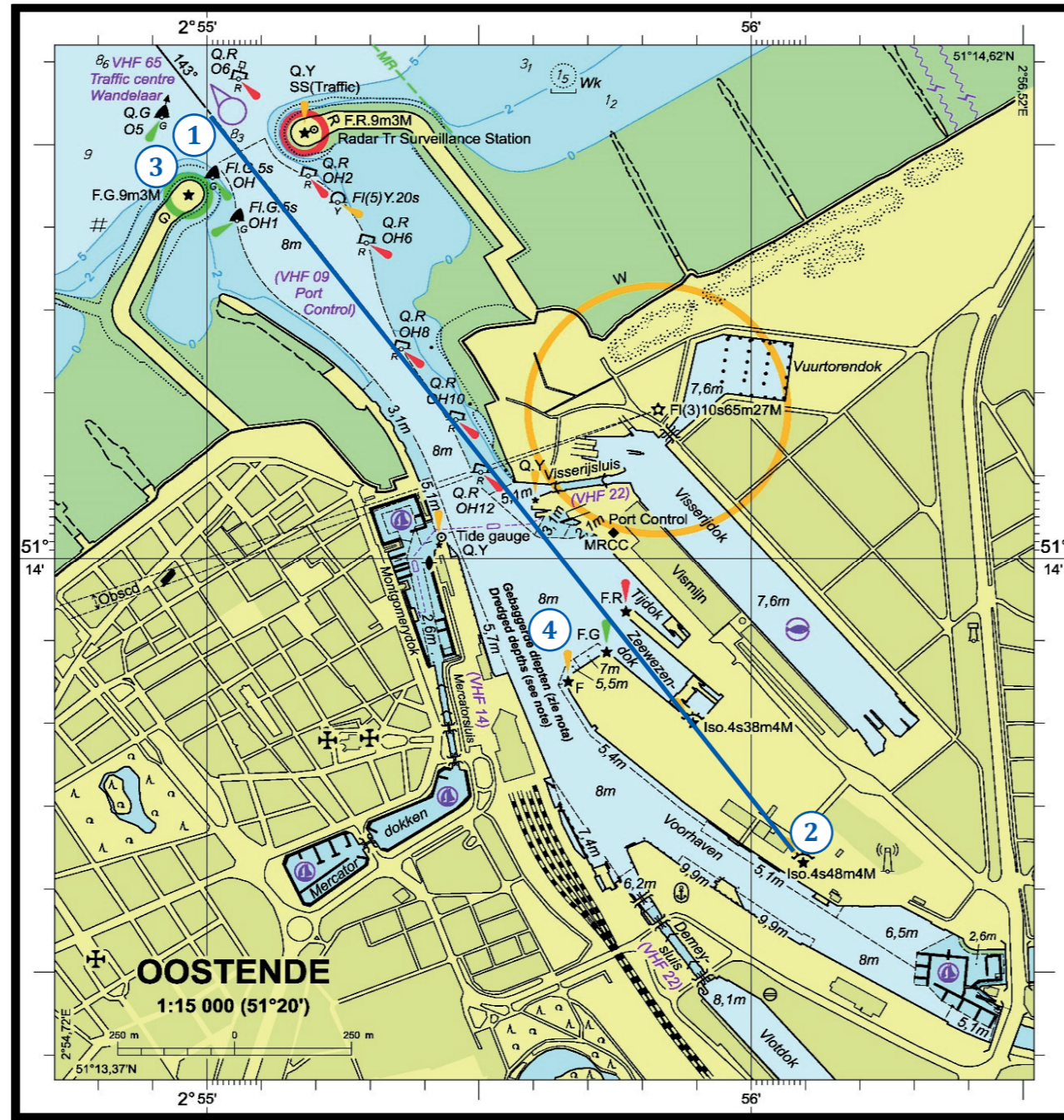
### Port Oostende

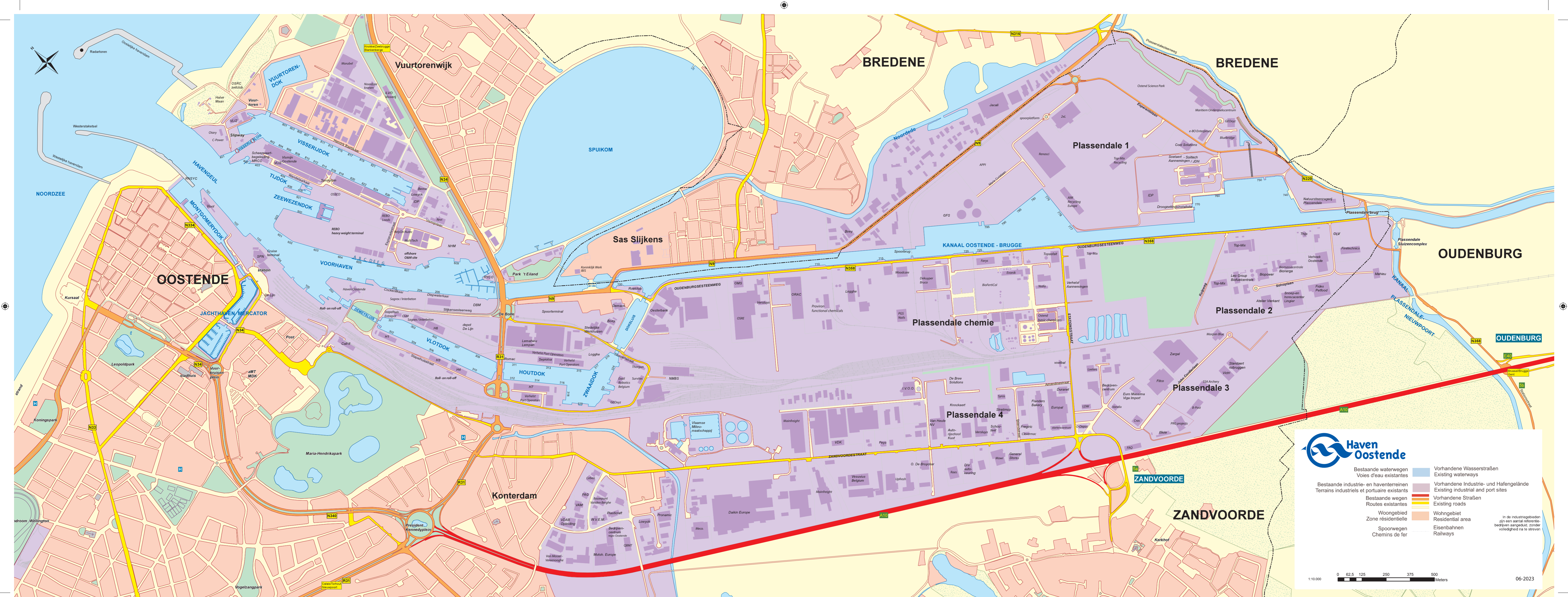
Slijkensesteenweg 2, BE - 8400 Oostende  
[www.portofoostende.be](http://www.portofoostende.be) | [info@portofoostende.be](mailto:info@portofoostende.be)



## APPROACH FROM OPEN SEA TO PORT BY LEADING LIGHTS

- 1-2 Alignment 143° indicated by leading lights
3. Access of vessels up to 200 m length  
Entrance = 130 m wide at -8 m LAT
4. A turning basin with a diameter of 300 m





**Haven Oostende**

Bestaande waterwegen  
Voies d'eau existantes

Bestaande industrie- en haventerreinen  
Terrains industriels et portuaires existants

Bestaande wegen  
Routes existantes

Woongebied  
Zone résidentielle

Spoorwegen  
Chemins de fer

Vorhandene Wasserstraßen  
Existing waterways

Vorhandene Industrie- und Hafengebäude  
Existing industrial and port sites

Vorhandene Straßen  
Existing roads

Wohnggebiet  
Residential area

Eisenbahnen  
Railways

In de industriegebieden zijn een aantal referentiebedrijven aangegeven, zonder volledigheid na te streven

0 62,5 125 250 375 500 Meters

1:10.000

06-2023